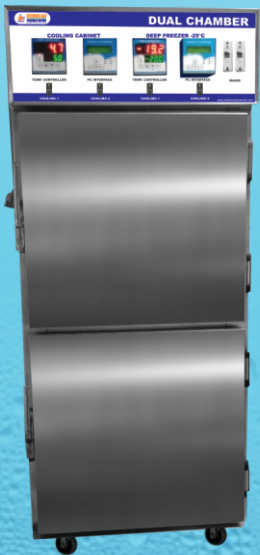




# OHMKAR<sup>TM</sup> equipments

AN ISO 9001 : 2015 CERTIFIED COMPANY



## OHMKAR EQUIPMENTS

Unit No. 23, Rajprabha Udyog Nagar Extension 2 (Co. op. Soc. Ltd.), Bldg No.1,  
Near Golani Naka, Waliv, Vasai (E), Dist. Palghar - 401 208. Maharashtra, INDIA  
Mob. No. +91 7420872777 / 9975008252

E-mail : salesohmkarequip@gmail.com / sales1ohmkarequip@gmail.com

Website: www.ohmkarequipments.in





## Walk In Chambers



### BOD Chamber

Capacity: 3060 / 6000 / 8000 / 10000 / 12000 / 16000 liters  
Temp. Range: 15°C – 50°C  
Accuracy: ±0.5°C  
Uniformity: ±0.1°C  
Controller: PID / PLC based  
Compliance: Software 21 CFR part - 11

### Humidity Chamber

Capacity: 3060 / 6000 / 8000 / 10000 / 12000 / 16000 liters  
Temp. Range: 15°C – 50°C  
Humidity Range: 40% RH – 90% RH  
Accuracy: ±0.5°C / ± 2.0% RH  
Uniformity: ±2.0°C / ± 3.0% RH  
Resolution: 0.1°C / 0.1% RH  
Controller: PID / PLC based  
Compliance: Software 21 CFR part - 11

### Cooling Chamber

Capacity: 3060 / 6000 / 8000 / 10000 / 12000 / 16000 liters  
Temp. Range: 2°C – 8°C  
Accuracy: ±1.0°C  
Temp. Resolution: ±0.1°C  
Temp. Uniformity: ±2.0°C

### Photostability Chamber

Capacity: 227 / 400 liter  
Temperature / Humidity  
Range: 15°C - 50°C / 40% to 80% RH  
Accuracy: ± 1°C / ±2%RH  
Uniformity: ±2°C / ±2.0%  
Resolution: 0.1°C / 0.1%RH  
Controller: PID / PLC Based  
Compliance: Software 21 CFR part - 11



### BOD Incubator

Capacity: 90 / 227 / 325 / 400 / 500 / 600 / 800 / 1000 liters  
Temp. Range: 5°C – 60°C  
Accuracy: ± 1.0°C  
Uniformity: ± 2.0°C  
Controller: PID / PLC based



### Stability Chamber

Capacity: 90 / 227 / 325 / 400 / 500 / 600 / 800 / 1000 liters  
Temp. Range: 10°C – 60°C  
Humidity Range: 40% RH – 95% RH  
Accuracy: ±0.2°C / ± 2.0% RH  
Uniformity: ±0.2°C / ± 3.0% RH  
Controller: PID / PLC based



### Bacteriological Incubator

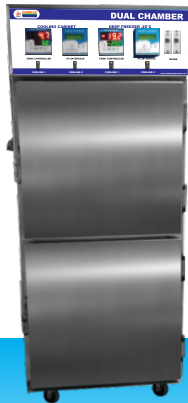
Capacity: 90 / 227 / 325 / 400 / 500 / 600 / 800 / 1000 liters  
Temp. Range: ambient +5°C – 60°C  
Accuracy: ± 0.5°C  
Uniformity: ± 1.0°C  
Controller: PID / PLC based



### Cooling Chamber

Capacity: 90 / 227 / 325 / 400 / 500 / 600 / 800 / 1000 liters  
Temp. Range: up to 2°C to 8°C  
Accuracy: ± 2.0°C  
Uniformity: ± 2.0°C  
Controller: PID / PLC based

NOTE: We also provide customized equipment as per customer requirements.



### Dual Chamber

Refrigerator / Freezer; Refrigerator / BOD; BOD / BOD; Freezer / BOD or as per requirements  
 Capacity: Customized  
 Temperature Range: Freezer: -20°C, Refrigerator: 2°C - 8°C, BOD: 5°C - 50°C  
 Accuracy: Freezer: ±3°C, Refrigerator: ±1°C, BOD: ±1°C



### Ultra Deep Freezer

Capacity: 90 / 227 / 325 / 400 / 500 / 600 / 800 / 1000 liters  
 Temp. Range: up to 0°C / - 20°C / - 60°C / - 80°C  
 Accuracy: ± 3.0°C  
 Uniformity: ± 5.0°C  
 Controller: PID / PLC based



### Recirculating Bath

Capacity: 10 / 15 liters  
 Temp. Range: 10°C to 50°C / 0°C to 50°C / -10°C to 50°C / -20°C - 50°C / -40°C  
 Accuracy: ±0.2°C or better  
 Uniformity: ±0.2°C / ± 3.0% RH



### Autoclave

Capacity: 21 / 53 / 88 / 140 / 178 liters  
 Temp. Range: Ambient ±121°C to 125°C  
 Pressure Range: 15 PSI  
 Controller: PID



### Hot Air Oven

Capacity: 90 / 120 / 200 / 325 liters  
 Temp. Range: Ambient ±5°C to 250°C / 300°C / 350°C  
 Accuracy: ± 2.0°C  
 Controller: PID



### Vacuum Oven

Capacity in Sizes (Inches) : 12 x 12 x 12 / 20 x 20 x 21  
 Temp. Range: Ambient ±50°C to 200°C  
 Vacuum Range: more than 700 mm Hg  
 Controller: PID



### Muffle Furnace

Capacity: specific  
 Temp. Range: up to 1150°C  
 Accuracy: ± 2.0°C  
 Controller: PID / PLC based



### Portable Humidity Chamber

Capacity: 22 liter  
 Temperature / Humidity  
 Range: 0°C - 50°C / 15% to 90% RH  
 Accuracy: ± 0.2°C / ±0.5%RH  
 Resolution: 0.1°C / 0.1%RH  
 Controller : PID



### Magnetic Stirrer

Loading Capacity: 2 / 3 / 4 / 5 liter  
 Speed Range: 100 rpm to 1000 rpm



### Hot Plate

Capacity: 2 / 3 / 4 / 5 liter  
 Temp. Range: 50°C to 250°C  
 Accuracy: ±2° C  
 Uniformity: ±0.2 C



### Laminar Air Flow

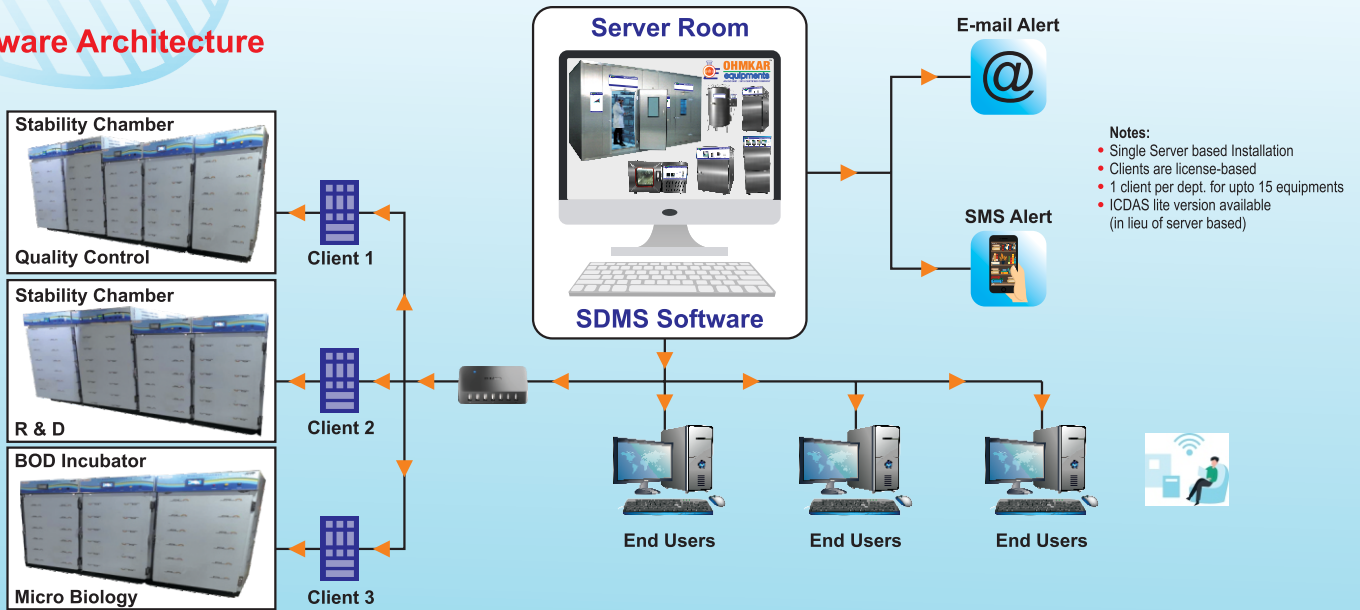
**Airflow:** Vertical / Horizontal @ 70% recirculated / 30% exhausted  
**HEPA:** Filter efficiency > 99.97% at 0.3 microns (factory DOP Tested). Pre filter 95% efficient @ 5 microns.  
**Controller:** Digital microprocessor control with LCD Display for UV Light, Blower / Motor, Fluorescent Light; **Cleanliness:** Class 100; **Light Intensity:** 700 LUX  
**Sound Level:** < 66 dB.  
**Material of Construction:** Inner & outer Stainless Steel 304 or Inner SS 304 & Outer MS Powder Coated; **Safety:** Safety mechanism for UV auto off when door opens. Indicator for HEPA blockage.

**NOTE: We also provide customized equipment as per customer requirements.**

# Web-based Software SDMS

Instantly connect and control your chambers from anywhere without installing software.

## Software Architecture



## Features | Functions | Flexibility

Touch Screen Display	Touch Screen Door Access Systems	Mobile Alert System	2nd Generation I-Series Controllers	Ethernet Communication	Humidity System
Standby Humidity & Cooling Systems	Complete Range of Alarms	Alarm Transmissions	Multiple Sensors	Documentation & Training	Audit Support

## Precise Control with diverse Application

## Our Valuable Customers

			<i>and many more....</i>		